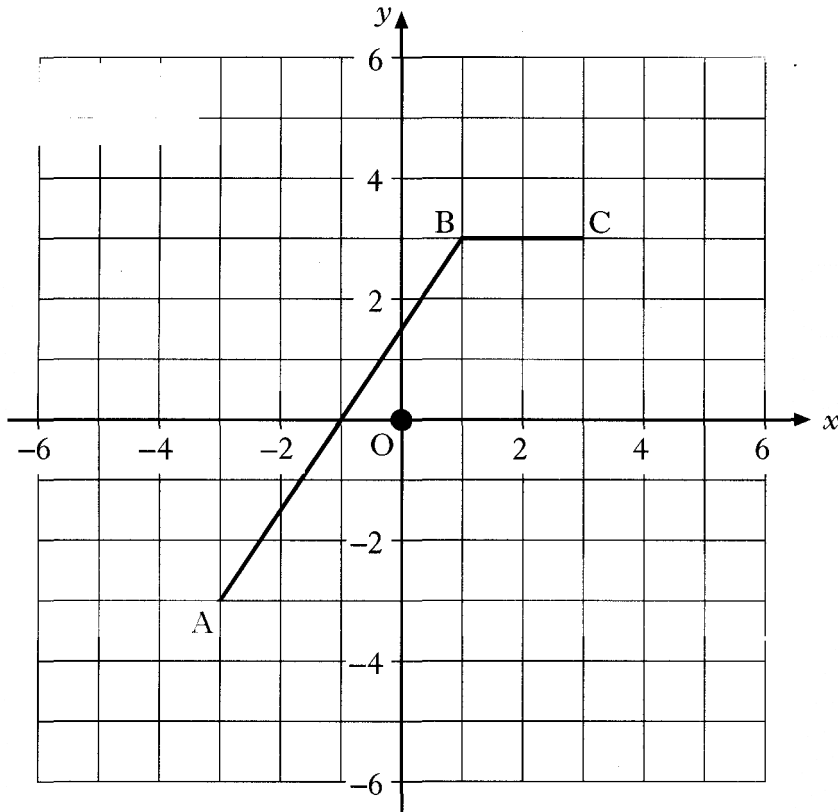


AB and BC are two sides of a kite ABCD.



2008 P1 Q3

(a) Plot point D to complete kite ABCD.

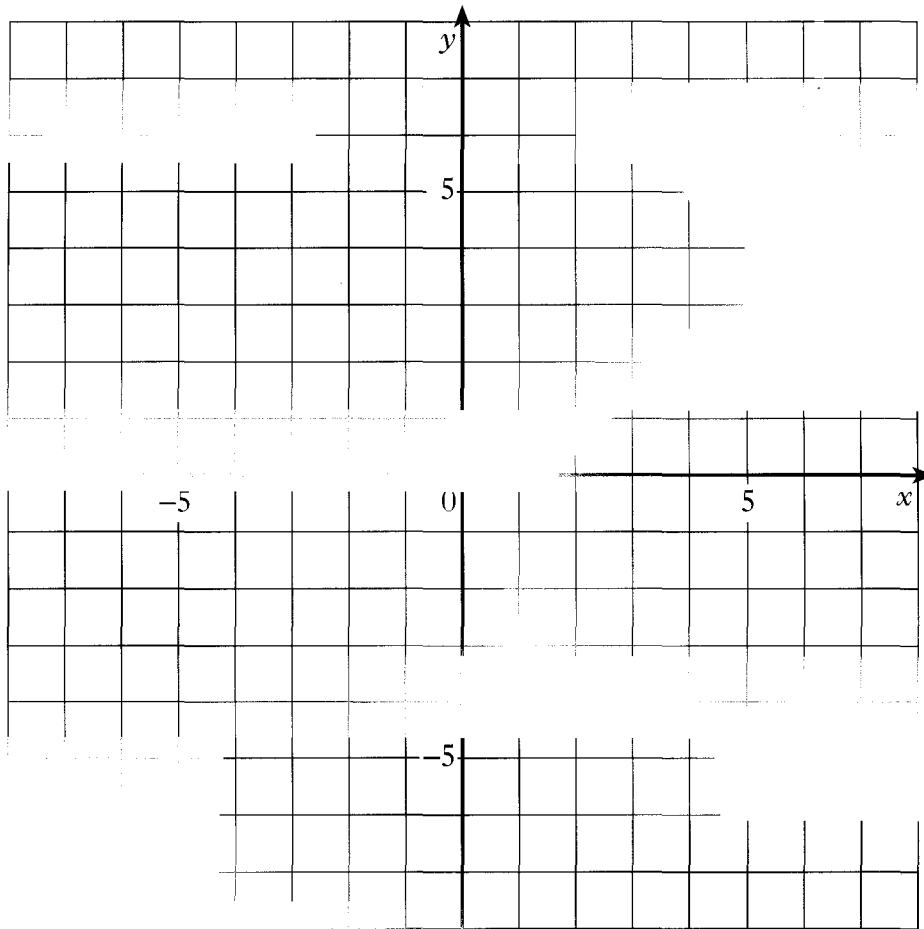
1

(b) Reflect kite ABCD in the **y-axis**.

3

Ans

(a) On the grid below, plot the points $A(7, 5)$, $B(5, -1)$ and $C(-1, -3)$.



(b) Plot a fourth point D so that $ABCD$ is a rhombus.

(c) Reflect rhombus $ABCD$ in the **y -axis**.

2

1

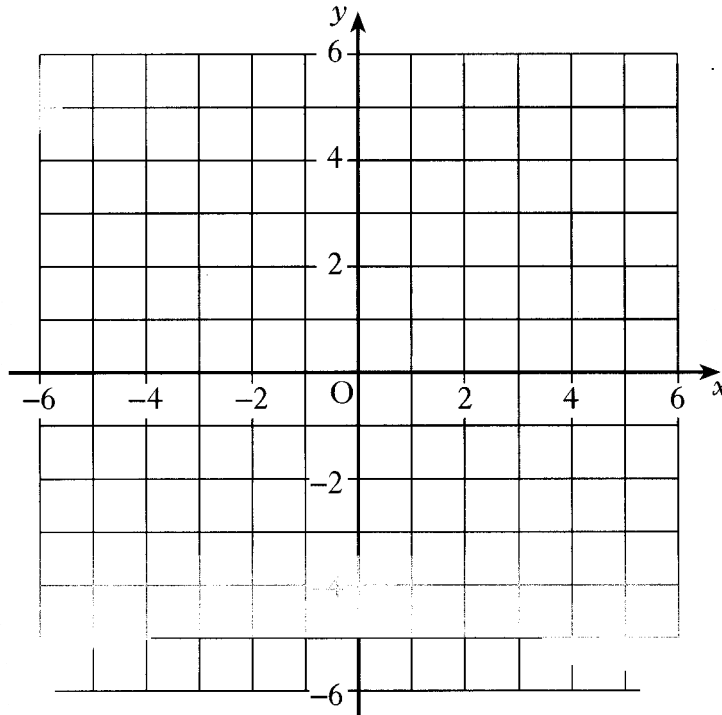
2

2005 P1 Q5

Ans

2002 P1 Q5

(a) On the grid below, plot the points A(-4, -3), B(3, -1) and C(4, 4).



(b) Find the gradient of the line AB.

(c) Plot the fourth point D so that shape ABCD is a parallelogram.

Write down the coordinates of point D.

2

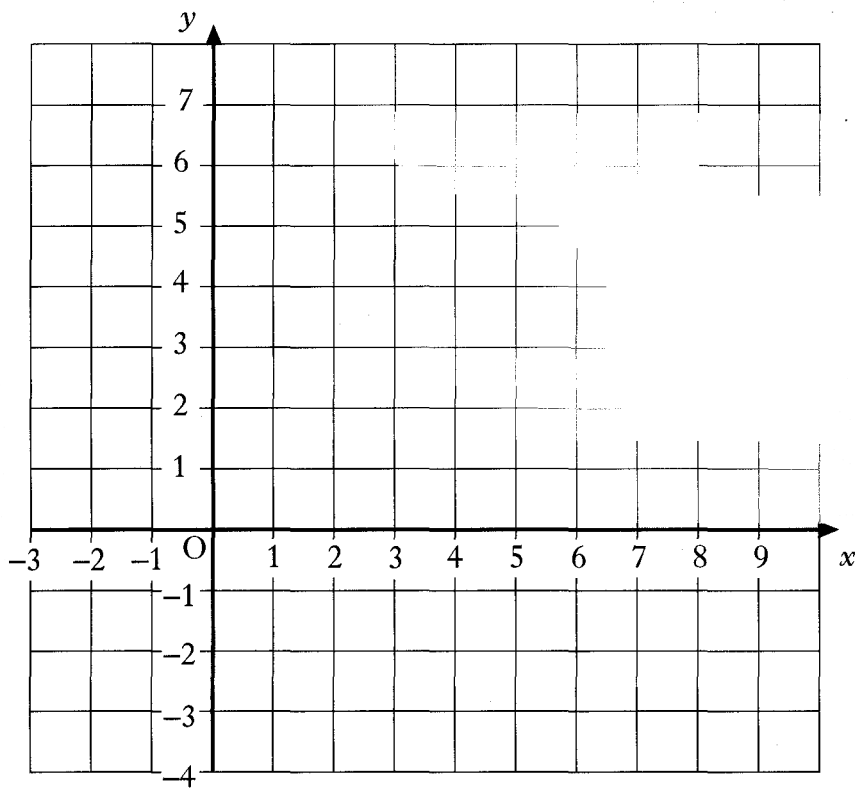
2

2

Ans (b) $\frac{2}{7}$ (c) D(-3, 2)

2001 P1 Q7

(a) Plot the points A (4,6) and C (4,-2) on this grid.



(b) ABCD is a rhombus with area 24 square units.
Plot B and D on the grid.

1

3

Ans