



1. $x = 210^\circ, 330^\circ$

2. 7.4 m^2

3. (a) median = 16 semi-interquartile range = 3

(b) On average, more butterflies visited the garden each day in 2008 than in 2018.
($16 > 14$)

The number of butterflies visiting the garden each day was more consistent in 2008 than in 2018. ($3 < 5$)

4. $x = \frac{20}{9}$

5. (a) $AF = p + q$ (b) $EB = -2q - p$

6. £40

7. $2x^8 + x$

8. 135°

9. “Two equal real roots” or “One repeated real root”

10. 20 cm^3

11. (a) 1.25 metres (b) 6 metres

12. 25.8°

13. $x = 2.43, x = -1.10$

14. $x = \frac{3}{4}$

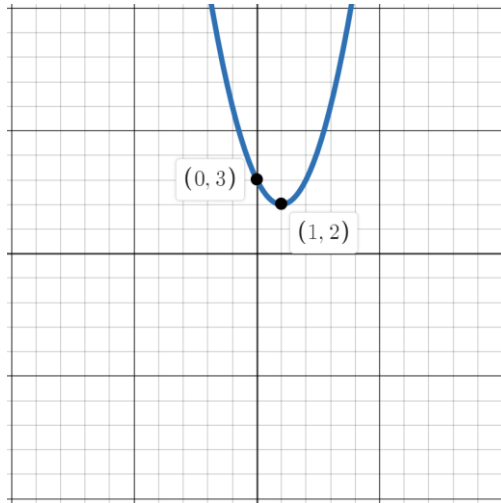
15. $a = 4, b = 2, c = 2$

16. (a) (1,2)

(b) $x = 1$

(c) (0,3)

(d)



17. $BC = 3 \text{ cm}$

18.
$$\frac{\cos x \tan x}{\sin x} = \frac{\cos x \left(\frac{\sin x}{\cos x} \right)}{\sin x} = \frac{\sin x}{\sin x} = 1$$

19.

