

FOR OFFICIAL USE

--	--	--	--	--	--

F

	KU	RE
Paper 1		
Paper 2		
Total		

2500/27/01

NATIONAL
QUALIFICATIONS
2012

WEDNESDAY, 2 MAY
9.00 AM – 9.20 AM

MATHEMATICS
STANDARD GRADE
Foundation Level
Paper 1
Non-calculator

Fill in these boxes and read what is printed below.

Full name of centre

Town

Forename(s)

Surname

Date of birth

Day Month Year

--	--	--	--	--	--

Scottish candidate number

--	--	--	--	--	--	--	--	--	--

Number of seat

- 1 You may NOT use a calculator.**
- 2 Answer as many questions as you can.
- 3 Write your working and answers in the spaces provided. Additional space is provided at the end of this question-answer book for use if required. If you use this space, write clearly the number of the question involved.
- 4 Full credit will be given only where the solution contains appropriate working.
- 5 Before leaving the examination room you must give this book to the Invigilator. If you do not, you may lose all the marks for this paper.



Marks

1. Work out the answers to the following.

(a) $95 - 37$

WORKING	
ANSWER	

1

(b) $29.61 \div 7$

WORKING	
ANSWER	

1

(c) 25% of £120

WORKING	
ANSWER	£

2

KU	RE

KU	RE
2	

2. Anne is buying a house.
She has to pay the fees shown below.

- Surveyor's fee £130
- Administration fee £450
- Lawyer's fee £550



Calculate the total fees Anne has to pay.

WORKING	
ANSWER	£

2

Marks

KU	RE

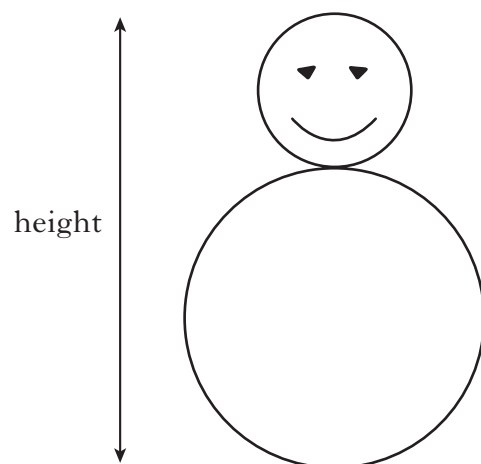
4. A jug contains 1250 millilitres of coffee.
Marie pours one fifth of the coffee into her cup.
How many millilitres of coffee will be in her cup?



WORKING	
ANSWER	millilitres

2

5. Two circles are drawn to make a snowman as shown below.



The **diameter** of the body is 12 centimetres.

The **radius** of the head is 3 centimetres.

Calculate the height of the snowman.

WORKING
ANSWER

ANSWER

centimetres

3

--	--

--	--

--	--

--	--

--	--

--	--

--	--

--	--

--	--

--	--

--	--

--	--

--	--

Marks

KU	RE
1	
3	

6. Jed arrived home from school at 3.45 pm.

(a) Write 3.45 pm as a **24 hour time**.

ANSWER	
--------	--

(b) He started studying for his mathematics exam immediately.

He studied for 85 minutes.

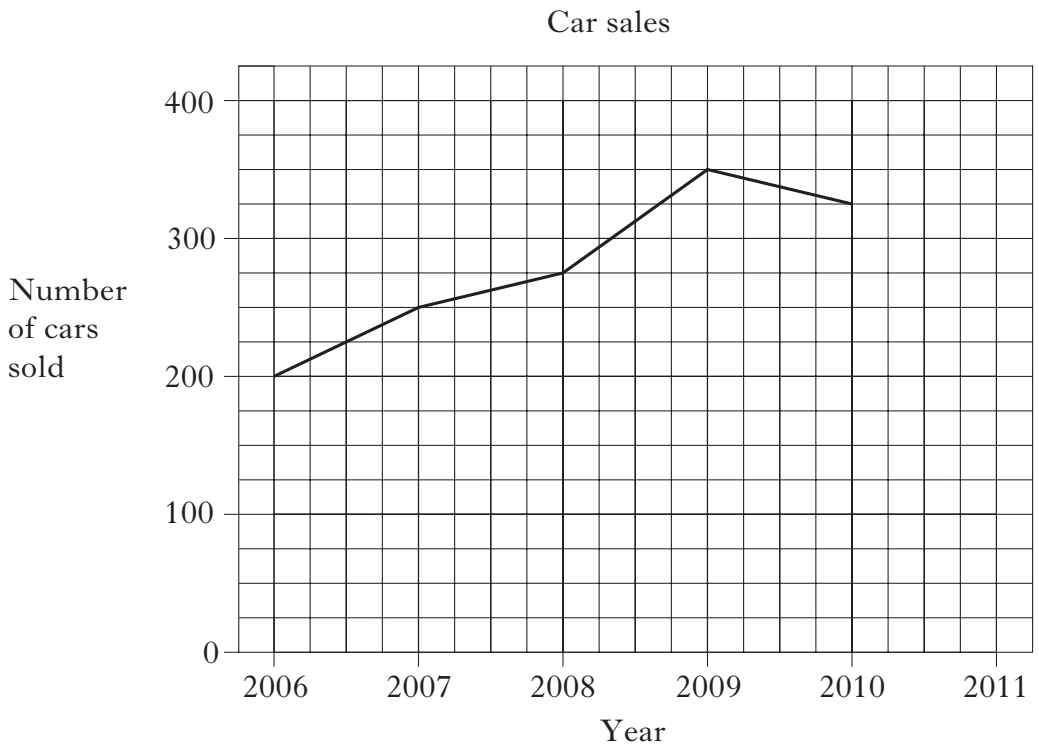
When did he finish studying?



WORKING	
ANSWER	

	KU	RE
1		
3		
1		

7. The graph shows the number of cars sold by a garage each year from 2006 to 2010.



- (a) How many cars were sold in 2007?

ANSWER		cars
--------	--	------

1

- (b) The number of cars sold in 2011 was double the number of cars sold in 2006.

Complete the graph to show the number of cars sold in 2011.

WORKING	

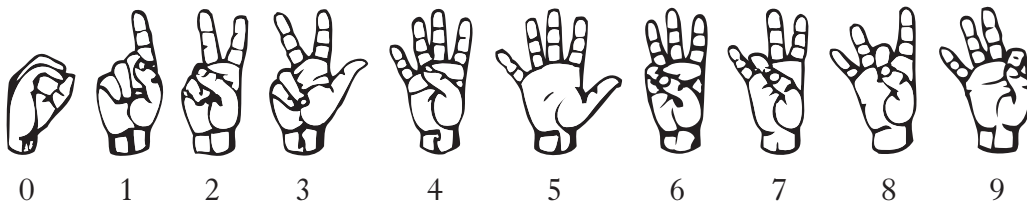
3

- (c) Describe the trend of the graph.

ANSWER	

1

8. The hand signs for numbers in the American Sign Language are shown below.

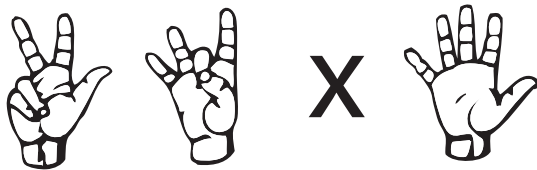


A teacher uses the hand signs below to get his class to work out 79×4 .



WORKING	79
	$\times 4$
	<u>316</u>
ANSWER	316

Write down the working and answer for the hand signs shown below.



WORKING	
ANSWER	

4

[END OF QUESTION PAPER]